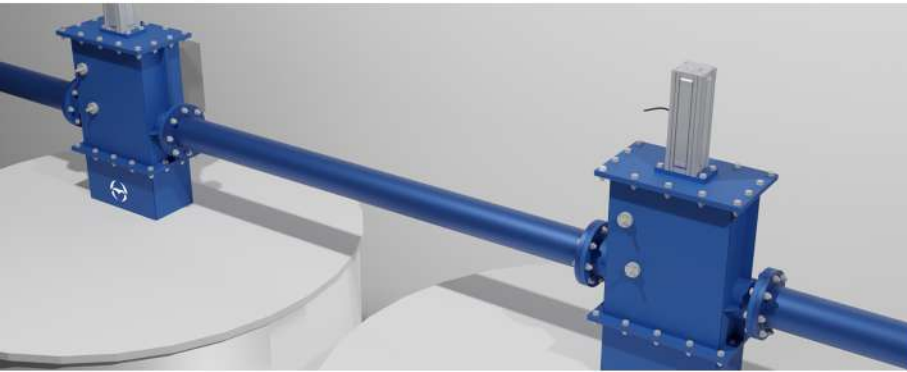
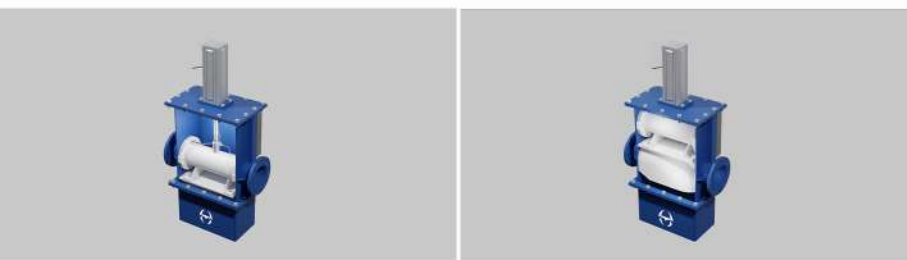


FEATURES

- Silo selection valve allows multiple silos to be fed without needing additional equipment or bends.
- They are mounted on top of silos in pneumatic conveying systems.
- A silo selection valve is placed on each desired possible destination.
- They provide better flow since they eliminate the need for bends.
- Easy to install and low maintenance.



- Durable.
- Heavy duty.
- Operating pressure up to 6 barg.
- Equipped with PN16 flange.
- Equipped with solenoid valve and position switch (Automation system integration).
- To ensure no leakage in both conditions inflatable seals are utilized in both.
- Optional high temperature design available up to 180°C.



Working Prensible

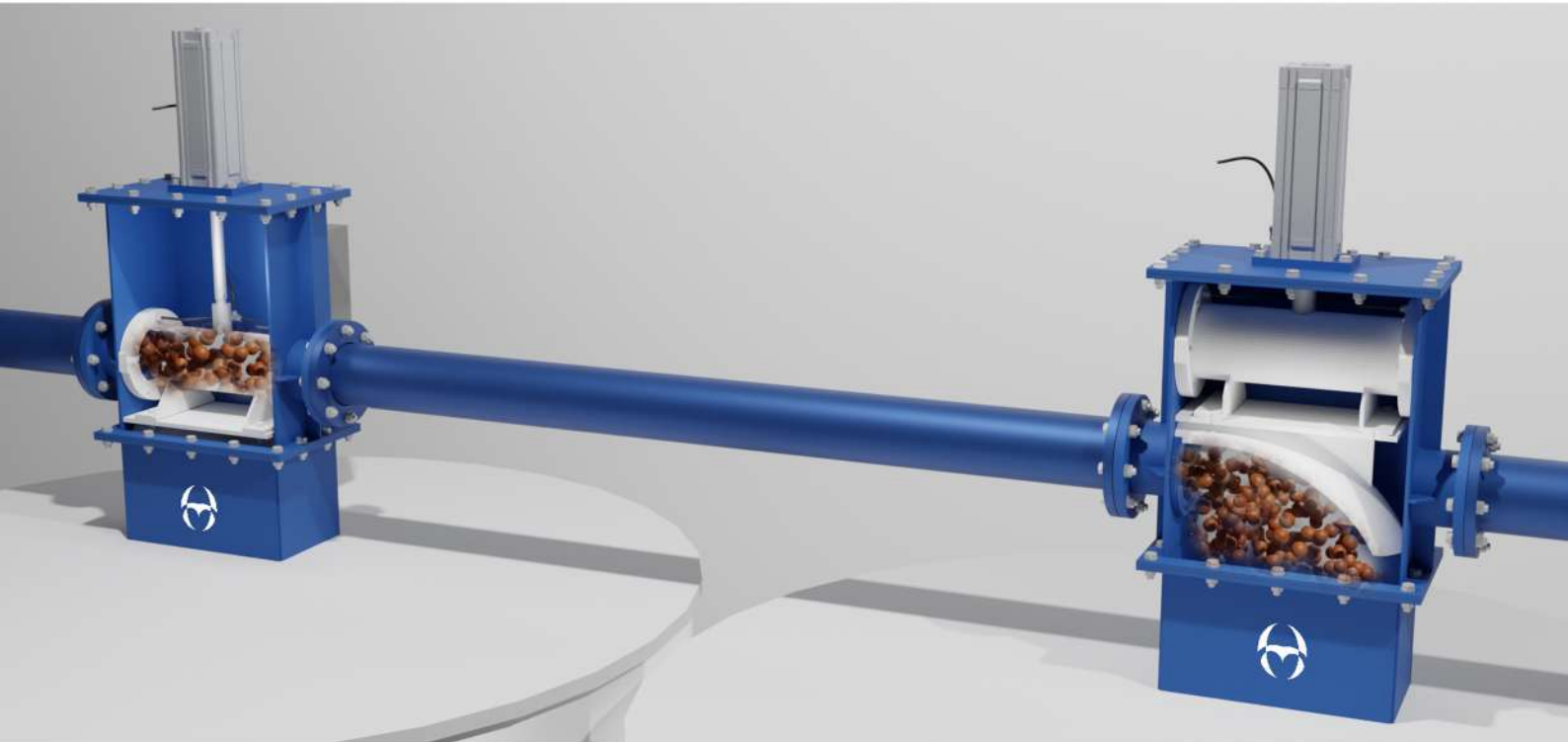


Compliance	
CE*	Compatible with CE (2006/42/EC) and (2014/35/EU)*

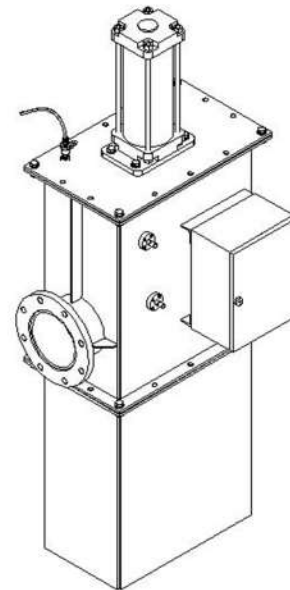
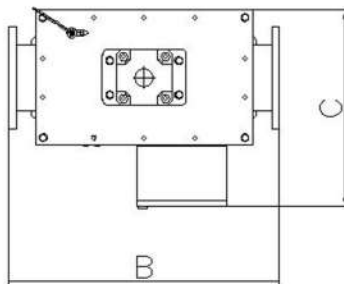
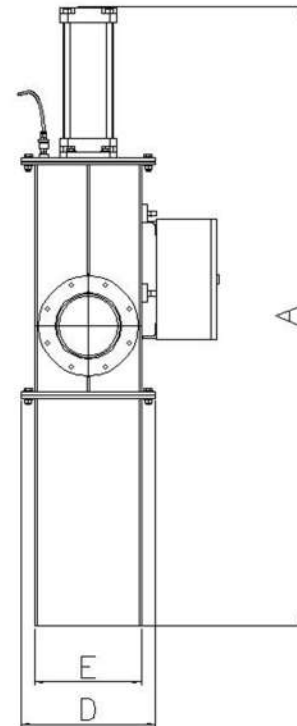
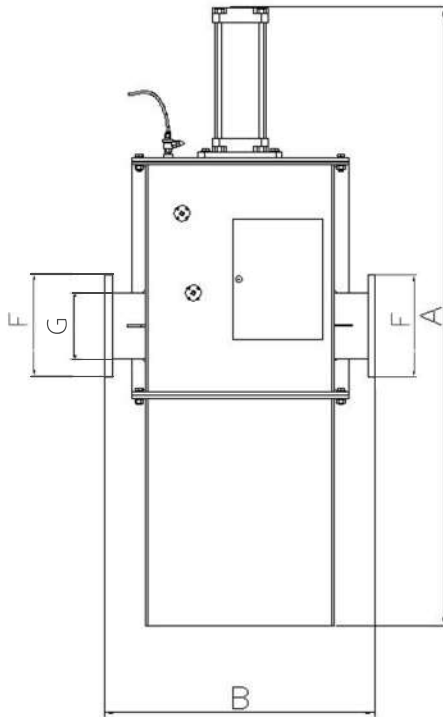
Technical Properties	
Operating Temperature	Up to 180°C
Operating Pressure	6 barg
Size	2" - 8"
Flange	PN16
Control	Pneumatic Piston with Solenoid Valve and Position Switch

Materials		
Body	Standard	Carbon Steel
	Optional	Stainless Steel
Seal	Standard	Rubber
		Silicon

- Various sizes available for manufacturing according to the conveying line type and size.
- Both operating conditions are instructed via the automation control system.
- Deflector is driven by pneumatic piston.
- Different material options for deflector lining available for handling abrasive materials.
- Construction material options for valve body available.



- Has 2 operating conditions: “By-pass” and “Dump”
- “By-pass” condition: Piston moves downwards pushing the pipe into place, seals inflate and lock the position of the pipe and material is not dumped on that station (by-passes), moving straight onto the next silo.
- “Dump” condition: With the instruction from the automation system seals inflate, position of the deflector is locked, and material is dumped into the silo.



* can differ on installation.

Models	Dimensions						
	A*	B	C	D	E	F	G
SSV80	1030	524	528	300	206	Ø200	Ø89
SSV100	1173	552	528	300	206	Ø220	Ø114
SSV125	1376	684	549	346	252	Ø250	Ø140
SSV150	1655	757	576	373	279	Ø285	Ø168
SSV200	2063	900	654	450	358	Ø340	Ø219