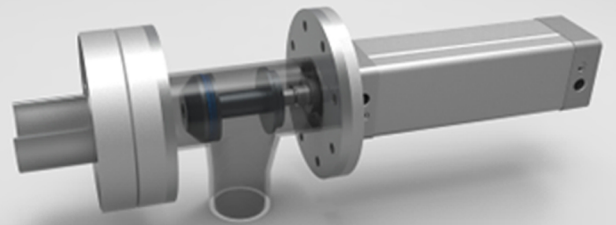
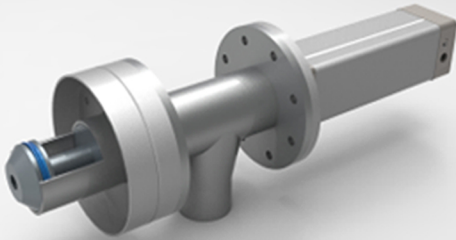


FEATURES

- Sampling without stopping the operation.
- Automation integration.
- Volumetric sampling.
- Sample size of 250 cc.
- Custom body designs available for different sample sizes.
- Equipped with pneumatic control valve and flanges.
- Downpipe sampling and hopper, silo sampling configurations available.
- Aluminum cast body.
- Adjustable sampling time intervals.
- Sanitary design.
- Equipped with position switches.
- Easy installation.
- Manual, motor and piston drive configurations available.



GENERAL DIMENSIONS

