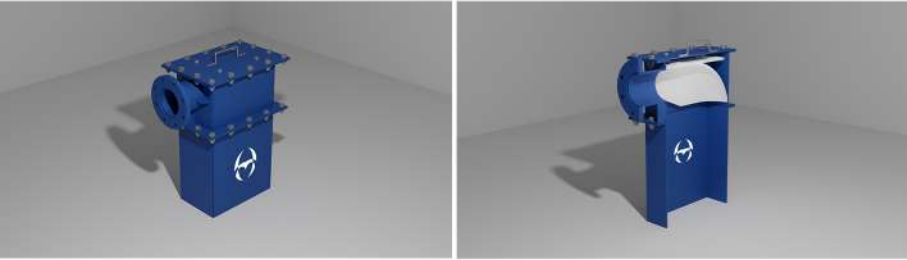


FEATURES

- End Piece is an equipment used for terminating the material flow in pneumatic conveying lines at the desired destination silo or bin etc.
- More durable and reliable than standard pipe termination.
- A more low profile option than a long radius bend termination.
- Heavy duty.



- Easy to install and low maintenance.
- Design enables easy deflector replacement instead of complete equipment replacement.
- Equipped with an internal Ni-hard deflector.
- By means of the deflector horizontally flowing material is dumped into the silo.
- The Ni-Hard deflector helps to reduce equipment wear.
- No moving parts.
- Equipped with PN16 flange.
- Different material options for deflector lining available for handling abrasive materials.
- Various sizes available for manufacturing according to the conveying line type and size.



Technical Properties

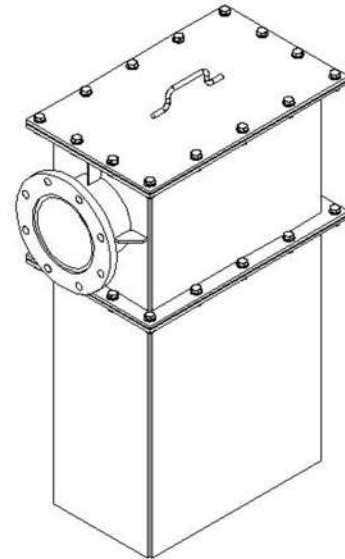
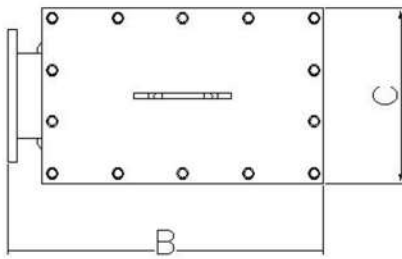
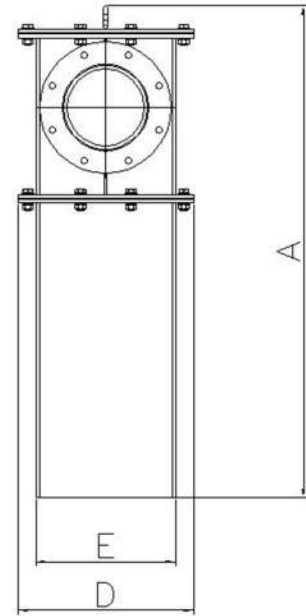
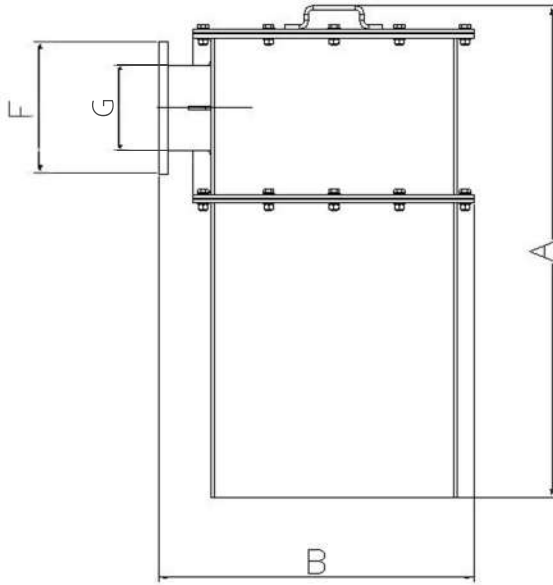
Flange	PN16
Size	2" - 8"

Materials

Body	Standard	Carbon Steel
Deflector	Standard	Ni-hard



Working Principle



* can differ on installation.

Models	Dimensions						
	A*	B	C	D	E	F	G
EP50	387	374	225	225	151	Ø165	Ø60
EP80	558	469	300	300	206	Ø200	Ø89
EP100	664	494	300	300	206	Ø220	Ø114
EP125	792	613	344	344	252	Ø250	Ø140
EP150	965	715	373	373	279	Ø285	Ø168
EP200	1264	811	450	450	358	Ø340	Ø219